



**LED ORIENTALIGHT CO.,LTD**



***Let LED illuminate The World!***



**Professional High-power LED optoelectronic  
products manufacturer**

[HTTP://WWW.LEDORIENTALIGHT.COM](http://www.ledorientalight.com)



## COMPANY PROFILE:

LED Orientalight CO., LTD is a high-tech enterprise, was established in 2006, located in Yousong industrial zone, Bao'an district, Shenzhen City, Guangdong Province, China, which is specialized in researching and developing, manufacturing, and selling LED lighting products. Orientalight attained ISO9001:2000 international quality management system certification, strictly executing the international quality control system on production. Orientalight has a well-trained team including full experienced technicians and salesmen. "customer priority, high quality, fast delivery" is our main principle, offering high-quality and competitive Led lighting products in market for all customers is our ceaseless pursuit.

**Products Orientalight** make include LED Tube , LED Panel light , LED down light , LED bulb ,LED spots light, LED strip light, LED Plug Light, LED Neon light, LED Highbay light and much more . All our products got CE ,ROHS Certification, were widely used in lighting sites in indoor and outdoor. commercial and residential, museum, schools, institutions, hospitals and other fields, reaching the market of Europe, North America, Japan, South-east Asia, Australia, Mid-East, India etc., and had won the trust and support from our numerous customers.

**Orientalight** always pays close attention to customers' requirements and new products development. "Innovation, professional, speciality, concentration" is our motto. Orientalight will satisfy customers with good quality at reliable and competitive price, fast delivery and excellent after service .

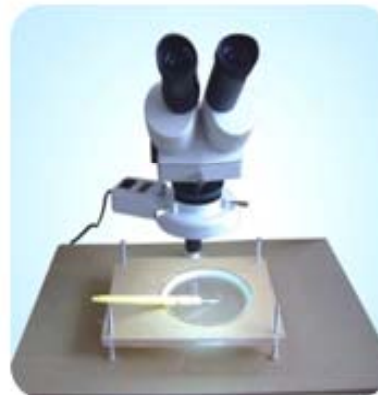
**Orientalight** hope could establish a long-term, mutual beneficial relationship with your company in the near future.



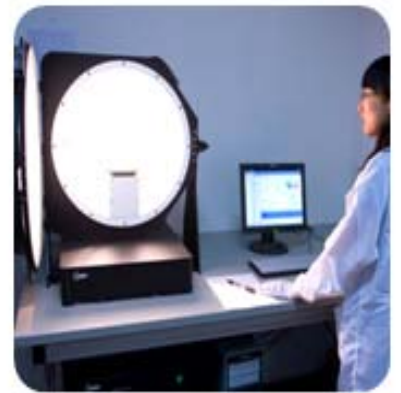
# Enterprise Honor and Strengt



High-pot test instrument



High-power microscope



Integrating sphere



SMT machine

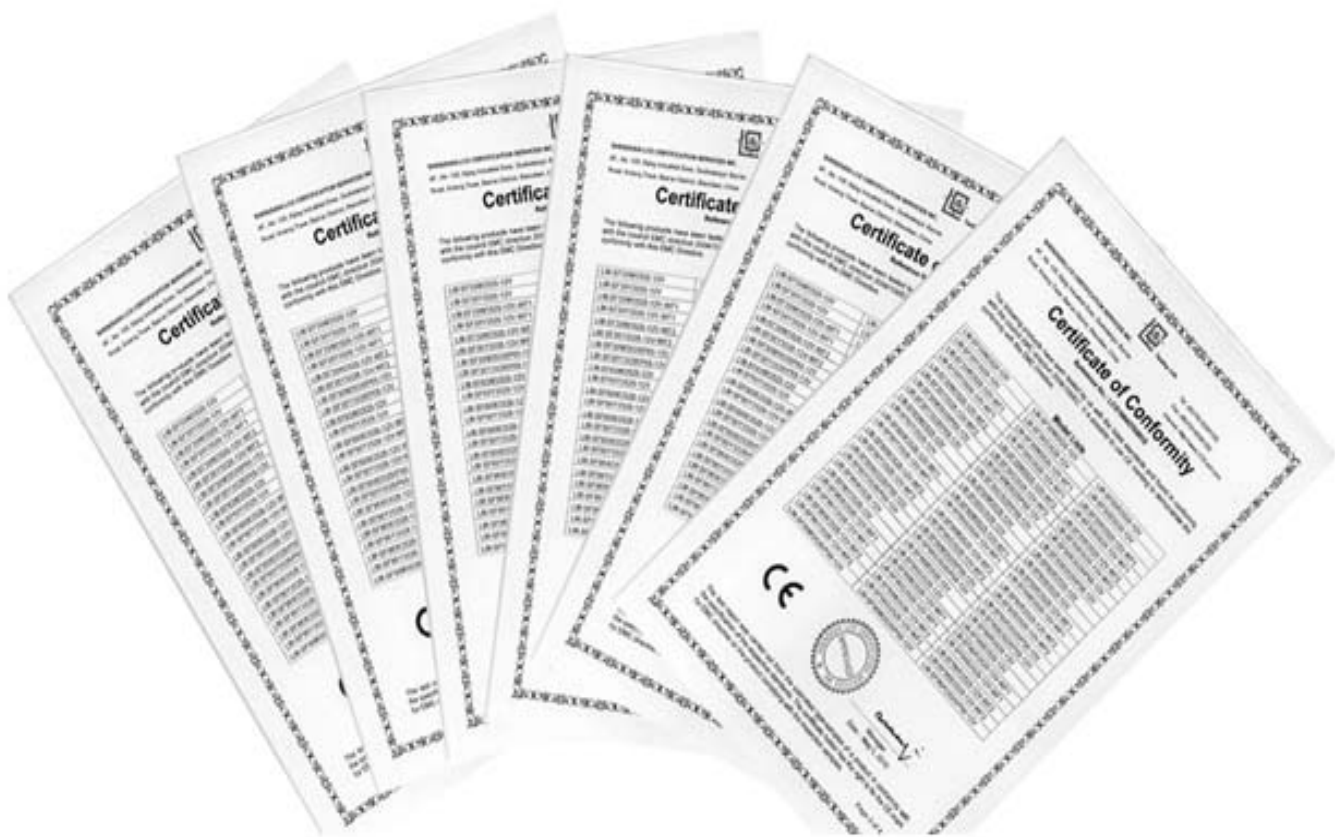


Integrating sphere



Reflow soldering

# Product Certificate





**01**

**LED Flexible Strip Light**

**SMD3528 Flexible Strip**

Non-Waterproof . . . . . 2  
 Epoxy cover waterproof(IP65) . . . . . 2  
 Silicon tube waterproof(IP67) . . . . . 2  
 Epoxy cover & Silicon tube waterproof(IP68) . . . . . 2

**SMD5050 Flexible Strip**

Non-Waterproof . . . . . 3  
 Epoxy cover waterproof(IP65) . . . . . 3  
 Silicon tube waterproof(IP67) . . . . . 3  
 Epoxy cover & Silicon tube waterproof(IP68) . . . . . 3

**SMD5050 RGB Flexible Strip**

Non-Waterproof . . . . . 4  
 Epoxy cover waterproof(IP65) . . . . . 4  
 Silicon tube waterproof(IP67) . . . . . 4  
 Epoxy cover & Silicon tube waterproof(IP68) . . . . . 4

**SMD5050 Dreams of color strip**

Non-Waterproof . . . . . 5  
 Epoxy cover waterproof(IP65) . . . . . 5  
 Silicon tube waterproof(IP67) . . . . . 5

**02**

**LED Tube Light**

**T8 Tube**

LED T8 Tube(Clear PC) . . . . . 7  
 LED T8 Tube(Frosted PC) . . . . . 7

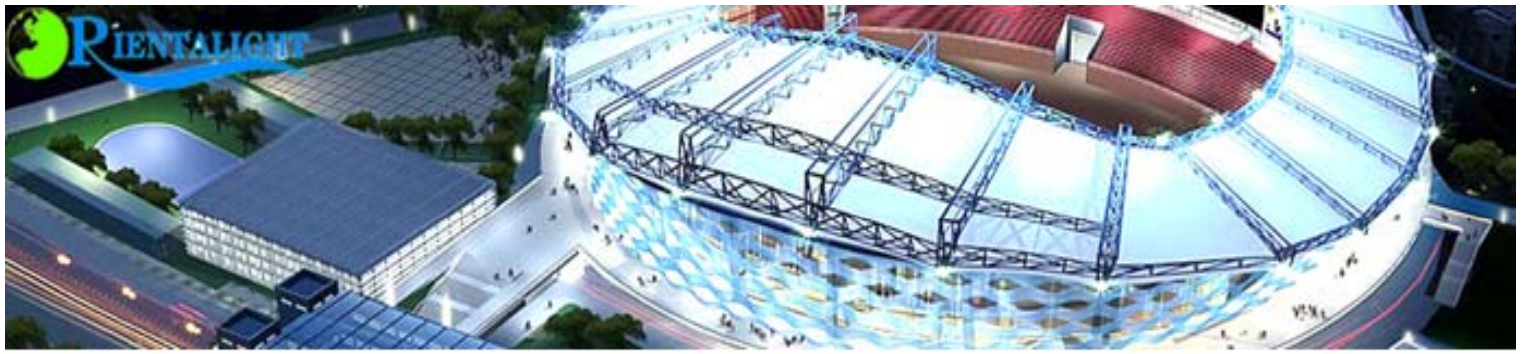
**T10Tube**

LED T10 Tube(Clear PC) . . . . . 8  
 LED T10 Tube(Frosted PC) . . . . . 8

**03**

**LED Bulb Light**

LED Bulb light(3W) . . . . . 10  
 LED Bulb light(5W) . . . . . 10  
 LED Bulb light(6W) . . . . . 10  
 LED Bulb light(7W) . . . . . 11  
 LED Bulb light(8W) . . . . . 11  
 LED Bulb light(9W) . . . . . 11  
 LED Bulb light(10W) . . . . . 11  
 LED Bulb light(12W) . . . . . 11



**LED Spots Light**

**MR11 Series**

MR11 Spots 1W . . . . . 13

**MR16 Series**

MR16 Spots 3W . . . . . 13

MR16 Spots 4W . . . . . 13

MR16 Spots 6W . . . . . 13

MR16 Spots 8W . . . . . 13

MR16 Spots 9W . . . . . 13

**GU10 Series**

GU10 Spots 3W . . . . . 14

GU10 Spots 4W . . . . . 14

GU10 Spots 6W . . . . . 14

GU10 Spots 8W . . . . . 14

GU10 Spots 9W . . . . . 14

**E27 Series**

E27 Spots 3W . . . . . 15

E27 Spots 4W . . . . . 15

E27 Spots 6W . . . . . 15

E27 Spots 8W . . . . . 15

E27 Spots 9W . . . . . 15

**E14 Series**

E14 Spots 3W . . . . . 16

E14 Spots 4W . . . . . 16

E14 Spots 6W . . . . . 16

**PAR30 Series**

PAR30 5W . . . . . 17

PAR30 7W . . . . . 17

**PAR38 Series**

PAR38 9W . . . . . 17

PAR38 12W . . . . . 17

**AR111 Series**

AR111 DC12V . . . . . 18

AR111 High Voltage . . . . . 18

**LED Down Light**

Recessed Down Light . . . . . 20

Recessed Down Light(PC Cover) . . . . . 21

Puck Light . . . . . 22



<b>06</b>	<b>LED Plug Light(G24)</b>
	LED G24 Light . . . . . 24
	LED Clear PC G24 Light . . . . . 24
	LED Frosted PC G24 Light . . . . . 24
<b>07</b>	<b>LED Panel Light</b>
	<b>Ultrathin Panel Light</b>
	300X300 . . . . . 27
	300X600 . . . . . 27
	600X600 . . . . . 27
	300X1200 . . . . . 27
<b>08</b>	<b>LED Neon Light</b>
	LED Neon Rope light . . . . . 29
<b>09</b>	<b>LED HighBay Light</b>
	LED Power high bay light . . . . . 32
<b>10</b>	<b>LED Flood Light</b>
	LED Power Flood light . . . . . 34
<b>11</b>	<b>LED Street Light</b>
	LED Power Street light . . . . . 36
<b>12</b>	<b>Accessories</b>
	<b>Power Supply</b>
	Mini Power Supply . . . . . 37
	Indoor Power Sunpplly . . . . . 37
	Waterproof Power Supply . . . . . 37
	<b>Controller</b>
	Dimmable Controller . . . . . 38
	RGB Controller . . . . . 38
	Power Amplifier . . . . . 38
<b>13</b>	<b>Connector</b>
	Non-waterproof Connector . . . . . 39
	waterproof Connector . . . . . 39

第 7 页



### LED Flexible Strip

#### Features:

- 1) Continuous length flexible LED light strips.
- 2) Runs on 12-volt systems like solar cell charged batteries.
- 3) Full range of colors: cool white, warm white, red, blue, green and yellow.
- 4) Superbright SMD top LED.
- 5) Can be ceiling or wall surface-mounted.
- 6) Maintenance free, with 3m adhesive tape on the back for easy installation.
- 7) Beam angle 120, Solid-state, high shock or vibration resistant
- 8) Body temperature: less than 20 degrees Celsius.
- 9) No RF interference, Every single color is available.
- 10) Working Temperature: -40 ~ 70 degrees Celsius.
- 11) Brightness degradation: 2% - 3% 1KH.
- 12) Lifespan: 50,000 hours.
- 13) No UV or IR radiation.
- 14) Non-waterproof and waterproof; Epoxy cover and silicon tube waterproof.

#### Applications:

Architectural lighting, Cove lighting, Commercial Lighting, Office Lighting, Warehouse Lighting, Supermarket etc. counters where UV or IR radiation is undesirable.

**SMD3528 Flexible Strip**



**LM-SF60M3528-12V**

Led Type: SMD3528  
 Color: Warm White  
 Power: 4.8W/m  
 Led Qty: 60pcs/meter  
 Bean angle: 120°  
 Inputvoltage: DC12V



**LM-SF60M3528-12V-WF1**

Led Type: SMD3528  
 Color: Warm White  
 Power: 4.8W/m  
 Led Qty: 60pcs/meter  
 Bean angle: 120°  
 Inputvoltage: DC12V



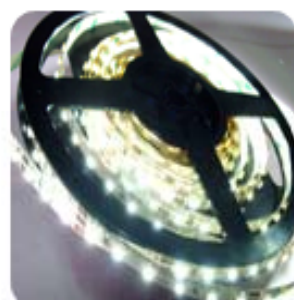
**LM-SF60M3528-12V-WF2**

Led Type: SMD3528  
 Color: Warm White  
 Power: 4.8W/m  
 Led Qty: 60pcs/meter  
 Bean angle: 120°  
 Inputvoltage: DC12V



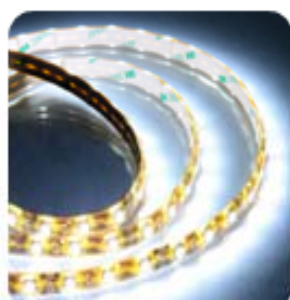
**LM-SF60W3528-12V-WF2**

Led Type: SMD3528  
 Color: White  
 Power: 4.8W/m  
 Led Qty: 60pcs/meter  
 Bean angle: 120°  
 Inputvoltage: DC12V



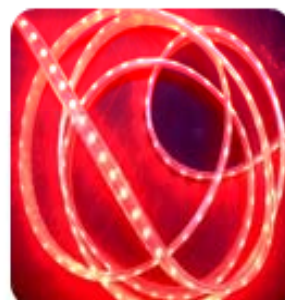
**LM-SF96W3528-12V**

Led Type: SMD3528  
 Color: White  
 Power: 7.68W/m  
 Led Qty: 96pcs/meter  
 Bean angle: 120°  
 Inputvoltage: DC12V



**LM-SF96W3528-12V-WF1**

Led Type: SMD3528  
 Color: White  
 Power: 7.68W/m  
 Led Qty: 96pcs/meter  
 Bean angle: 120°  
 Inputvoltage: DC12V



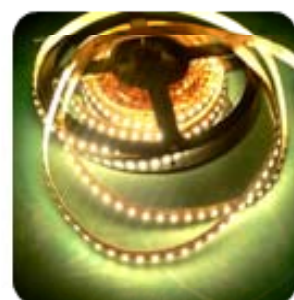
**LM-SF96R3528-12V-WF2**

Led Type: SMD3528  
 Color: Red  
 Power: 7.68W/m  
 Led Qty: 96pcs/meter  
 Bean angle: 120°  
 Inputvoltage: DC12V



**LM-SF96M3528IP68-12V**

Led Type: SMD3528  
 Color: White  
 Power: 7.68W/m  
 Led Qty: 96pcs/meter  
 Bean angle: 120°  
 Inputvoltage: DC12V



**LM-SF120M3528-12V**

Led Type: SMD3528  
 Color: Warm White  
 Power: 9.6W/m  
 Led Qty: 120pcs/meter  
 Bean angle: 120°  
 Inputvoltage: DC12V



**LM-SF120W3528-12V-WF1**

Led Type: SMD3528  
 Color: White  
 Power: 9.6W/m  
 Led Qty: 120pcs/meter  
 Bean angle: 120°  
 Inputvoltage: DC12V



**LM-SF120G3528-12V-WF2**

Led Type: SMD3528  
 Color: Green  
 Power: 9.6W/m  
 Led Qty: 120pcs/meter  
 Bean angle: 120°  
 Inputvoltage: DC12V



**LM-SF120A3528IP68-12V**

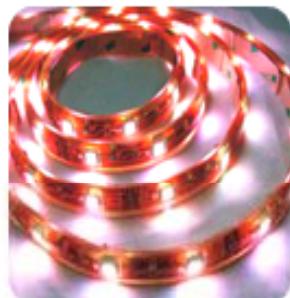
Led Type: SMD3528  
 Color: Amber  
 Power: 9.6W/m  
 Led Qty: 120pcs/meter  
 Bean angle: 120°  
 Inputvoltage: DC12V

## SMD5050 Flexible Strip



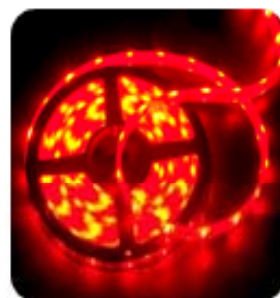
**LM-SF30W5050-12V**

Led Type: SMD5050  
 Color: Warm White  
 Power: 7.2W/m  
 Led Qty: 30pcs/meter  
 Beam angle: 120°  
 Inputvoltage: DC12V



**LM-SF30W5050-12V-WF1**

Led Type: SMD5050  
 Color: White  
 Power: 7.2W/m  
 Led Qty: 30pcs/meter  
 Beam angle: 120°  
 Inputvoltage: DC12V



**LM-SF30R5050-12V-WF2**

Led Type: SMD5050  
 Color: Red  
 Power: 7.2W/m  
 Led Qty: 30pcs/meter  
 Beam angle: 120°  
 Inputvoltage: DC12V



**LM-SF30G5050IP68-12V**

Led Type: SMD5050  
 Color: Green  
 Power: 7.2W/m  
 Led Qty: 30pcs/meter  
 Beam angle: 120°  
 Inputvoltage: DC12V



**LM-SF48M5050-12V**

Led Type: SMD5050  
 Color: Warm White  
 Power: 10.8W/m  
 Led Qty: 48pcs/meter  
 Beam angle: 120°  
 Inputvoltage: DC12V



**LM-SF48W5050-12V-WF1**

Led Type: SMD5050  
 Color: White  
 Power: 10.8W/m  
 Led Qty: 48pcs/meter  
 Beam angle: 120°  
 Inputvoltage: DC12V



**LM-SF48B5050-12V-WF2**

Led Type: SMD5050  
 Color: Blue  
 Power: 10.8W/m  
 Led Qty: 48pcs/meter  
 Beam angle: 120°  
 Inputvoltage: DC12V



**LM-SF48M5050IP68-12V**

Led Type: SMD5050  
 Color: Warm White  
 Power: 10.8W/m  
 Led Qty: 48pcs/meter  
 Beam angle: 120°  
 Inputvoltage: DC12V



**LM-SF60G5050-12V**

Led Type: SMD5050  
 Color: Green  
 Power: 14W/m  
 Led Qty: 60pcs/meter  
 Beam angle: 120°  
 Inputvoltage: DC12V



**LM-SF60B5050-12V-WF1**

Led Type: SMD5050  
 Color: Blue  
 Power: 14W/m  
 Led Qty: 60pcs/meter  
 Beam angle: 120°  
 Inputvoltage: DC12V



**LM-SF60W5050-12V-WF2**

Led Type: SMD5050  
 Color: White  
 Power: 14W/m  
 Led Qty: 60pcs/meter  
 Beam angle: 120°  
 Inputvoltage: DC12V



**LM-SF60M5050IP68-12V**

Led Type: SMD5050  
 Color: Warm White  
 Power: 14W/m  
 Led Qty: 60pcs/meter  
 Beam angle: 120°  
 Inputvoltage: DC12V

SMD5050 RGB Flexible Strip



LM-SF30RGB5050-12V

Led Type: SMD5050  
 Color: RGB  
 Power: 7.2W/m  
 Led Qty: 30pcs/meter  
 Bean angle: 120°  
 Inputvoltage: DC12V



LM-SF30RGB5050-12V-WF

Led Type: SMD5050  
 Color: RGB  
 Power: 7.2W/m  
 Led Qty: 30pcs/meter  
 Bean angle: 120°  
 Inputvoltage: DC12V



LM-SF30RGB5050-12V-WF

Led Type: SMD5050  
 Color: RGB  
 Power: 7.2W/m  
 Led Qty: 30pcs/meter  
 Bean angle: 120°  
 Inputvoltage: DC12V



LM-SF30RGB5060IP68-12V

Led Type: SMD5050  
 Color: RGB  
 Power: 7.2W/m  
 Led Qty: 30pcs/meter  
 Bean angle: 120°  
 Inputvoltage: DC12V



LM-SF48RGB5050-12V

Led Type: SMD5050  
 Color: RGB  
 Power: 10.8W/m  
 Led Qty: 48pcs/meter  
 Bean angle: 120°  
 Inputvoltage: DC12V



LM-SF48RGB5050-12V-WF

Led Type: SMD5050  
 Color: RGB  
 Power: 10.8W/m  
 Led Qty: 48pcs/meter  
 Bean angle: 120°  
 Inputvoltage: DC12V



LM-SF48RGB5050-12V-WF

Led Type: SMD5050  
 Color: RGB  
 Power: 10.8W/m  
 Led Qty: 48pcs/meter  
 Bean angle: 120°  
 Inputvoltage: DC12V



LM-SF48RGB5050IP68-12V

Led Type: SMD5050  
 Color: RGB  
 Power: 10.8W/m  
 Led Qty: 48pcs/meter  
 Bean angle: 120°  
 Inputvoltage: DC12V



LM-SF60RGB5050-12V

Led Type: SMD5050  
 Color: RGB  
 Power: 14W/m  
 Led Qty: 60pcs/meter  
 Bean angle: 120°  
 Inputvoltage: DC12V



LM-SF60RGB5050-12V-WF

Led Type: SMD5050  
 Color: RGB  
 Power: 14W/m  
 Led Qty: 60pcs/meter  
 Bean angle: 120°  
 Inputvoltage: DC12V



LM-SF60RGB5050-12V-WF

Led Type: SMD5050  
 Color: RGB  
 Power: 14W/m  
 Led Qty: 60pcs/meter  
 Bean angle: 120°  
 Inputvoltage: DC12V



LM-SF60RGB5050IP68-12V

Led Type: SMD5050  
 Color: RGB  
 Power: 14W/m  
 Led Qty: 60pcs/meter  
 Bean angle: 120°  
 Inputvoltage: DC12V

**SMD5050 Dreams of color strip Flexible Strip**



LM-SF12DC5050-12V-WF1

Led Type: SMD5050 RGB  
 Color: Dreams of color  
 Power: 2.4W/m  
 Led Qty: 12pcs/meter  
 Bean angle: 120°  
 Inputvoltage: DC12V



LM-SF30DC5050-12V-WF1

Led Type: SMD5050 RGB  
 Color: Dreams of color  
 Power: 6W/m  
 Led Qty: 30pcs/meter  
 Bean angle: 120°  
 Inputvoltage: DC12V



LM-SF32DC5050-5V-WF1

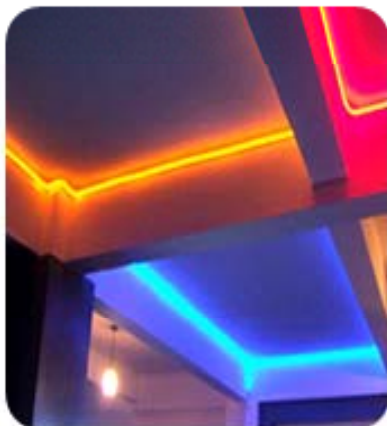
Led Type: SMD5050 RGB  
 Color: Dreams of color  
 Power: 6.4W/m  
 Led Qty: 32pcs/meter  
 Bean angle: 120°  
 Inputvoltage: DC12V



LM-SF30DC5050-12V-WF

Led Type: SMD5050 RGB  
 Color: Dreams of color  
 Power: 6W/m  
 Led Qty: 30pcs/meter  
 Bean angle: 120°  
 Inputvoltage: DC12V

**APPLICATION CASE**



Indoor Rooftop



Pub



Aquarium



Corridor



Dance hall



Automobile chassis



### LED T8 /T10 Tube

#### Features:

1. ORIENTALIGHT take high efficient constant current driving circuit for the SMD3014 led tube, conversion efficiency  $\geq 95\%$ .
2. Separation circuit design, which meet CE/FCC/UL standard.
3. 3000 hours lighting decay less than 1%.
4. Aluminum back cover and Aluminium PCB assure much better heat dissipation, thus longer lifespan for the LED.
5. The lifespan of led tube up to 50,000 hours, which is 10 times of traditional fluorescent tube. No need to replace lamp tube, ballast, electric fluorescent starter often. Save maintenance and management cost.
6. Low wattage, energy saving, for example, under the same illumination, traditional 40w daylight lamp consumes 1 kilowatt-hour of electricity per 25 hours. But the 15W led tube can last 66 hours. Save 65% electrical power.
7. Wide input range and frequency without strobe flash, quick transient response (no delay) and no damage for frequent on-off. It is suitable for the situation where need frequent on-off and wide voltage fluctuation range.
8. No UV and RF interference.
9. No hazardous materials & fully RoHS-compliant.
10. Widely used for office building, supermarket, hotel, factory, warehouse, gallery etc.

#### Applications:

LED T8/T10 Tube has been design to work with conventional fluorescent fixtures. To replace the short lived fluorescent lamps that are typically used in interior lighting. The LED tube can be used to retrofit existing fluorescent installations in all types of applica

SMD3014 T8 Tube



LM-T8-60E10W108-W

Led Type: SMD3014  
 Color: White  
 Power: 10W  
 Size: 600\*26  
 Lumen(lm): 950±30 lm  
 Inputvoltage: AC85-265V



LM-T8-120E18W180-W

Led Type: SMD3014  
 Color: White  
 Power: 18W  
 Size: 1200\*26  
 Lumen(lm): 1650±30 lm  
 Inputvoltage: AC85-265V



LM-T8-120E20W204-W

Led Type: SMD3014  
 Color: White  
 Power: 20W  
 Size: 1200\*26  
 Lumen(lm): 1800±30 lm  
 Inputvoltage: AC85-265V



LM-T8-150E22W224-W

Led Type: SMD3014  
 Color: White  
 Power: 22W  
 Size: 1500\*26  
 Lumen(lm): 1980±30 lm  
 Inputvoltage: AC85-265V



LM-T8M-120E18W180-W

Led Type: SMD3014  
 Color: White  
 Power: 18W  
 Size: 1200\*26  
 Lumen(lm): 1530±30 lm  
 Inputvoltage: AC85-265V



LM-T8M-120E20W204-W

Led Type: SMD3014  
 Color: White  
 Power: 20W  
 Size: 1200\*26  
 Lumen(lm): 1700±30 lm  
 Inputvoltage: AC85-265V



LM-T8M-150E22W224-W

Led Type: SMD3014  
 Color: White  
 Power: 22W  
 Size: 1500\*26  
 Lumen(lm): 1870±30 lm  
 Inputvoltage: AC85-265V



LM-T8M-150E25W252-W

Led Type: SMD3014  
 Color: White  
 Power: 25W  
 Size: 1500\*26  
 Lumen(lm): 2150±30 lm  
 Inputvoltage: AC85-265V

APPLICATION CASE



Parking lots



Plant



Classroom

SMD3014 T10 Tube



LM-T10-120E18W180-W

Led Type: SMD3014  
 Color: White  
 Power: 18W  
 Size: 1200\*30  
 Lumen(lm): 1650±30 lm  
 Inputvoltage: AC85-265V



LM-T10-120E20W204-W

Led Type: SMD3014  
 Color: White  
 Power: 20W  
 Size: 1200\*30  
 Lumen(lm): 1800±30 lm  
 Inputvoltage: AC85-265V



LM-T10-150E22W224-W

Led Type: SMD3014  
 Color: White  
 Power: 22W  
 Size: 1500\*30  
 Lumen(lm): 1980±30 lm  
 Inputvoltage: AC85-265V



LM-T10-150E25W252-W

Led Type: SMD3014  
 Color: White  
 Power: 25W  
 Size: 1500\*30  
 Lumen(lm): 2250±30 lm  
 Inputvoltage: AC85-265V



LM-T10M-60E10W108-W

Led Type: SMD3014  
 Color: White  
 Power: 10W  
 Size: 600\*30  
 Lumen(lm): 850±30 lm  
 Inputvoltage: AC85-265V



LM-T10M-120E18W180-W

Led Type: SMD3014  
 Color: White  
 Power: 18W  
 Size: 1200\*30  
 Lumen(lm): 1530±30 lm  
 Inputvoltage: AC85-265V



LM-T10M-120E20W204-W

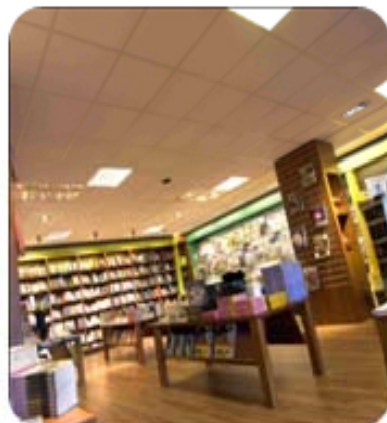
Led Type: SMD3014  
 Color: White  
 Power: 20W  
 Size: 1200\*30  
 Lumen(lm): 1700±30 lm  
 Inputvoltage: AC85-265V



LM-T10M-150E22W224-W

Led Type: SMD3014  
 Color: White  
 Power: 22W  
 Size: 1500\*30  
 Lumen(lm): 1870±30 lm  
 Inputvoltage: AC85-265V

APPLICATION CASE



Bookstore



Gymnasium



Exhibition hall



### LED Bulb Light

#### Features:

1. ORIENTALIGHT take high light efficient high power led for the LED Bulb.
2. High power LED Bulb, CE Rohs approval.
3. Imported Power LED Edison and CREE(XLAMP XP-E Q5) .
4. 3000 hours lighting decay less than 1%.
5. Aluminum housing and Aluminium PCB assure much better heat dissipation, thus longer lifespan for the LED.
6. Long lifespan up to 50,000 hours.
7. Low wattage, energy saving, the most important, save money on your electric bill.
8. No flicking, no UV and IR interference.
9. Can directly replace traditional incandescent bulbs or halogen bulbs.
10. Widely used for office building, supermarket, hotel, gallery, show room, cabinet, counter, etc.

#### Applications:

LED Bulb are widely used as pool light, shooting light, decorating light, showing and wall light, retail stores, residential interior/exterior, hospitality, and so on.

## LED Bulb light



LM-B1E3W-W

Led Type: Edison  
 Color: White  
 Power: 3W  
 Size(mm):  $\varnothing 50 \times 130$   
 Lumen(lm):  $240 \pm 10$  lm  
 Inputvoltage: AC85-265V



LM-B2E3W-W

Led Type: Edison  
 Color: White  
 Power: 3W  
 Size(mm):  $\varnothing 60 \times 113$   
 Lumen(lm):  $240 \pm 10$  lm  
 Inputvoltage: AC85-265V



LM-B3E3W-W

Led Type: Edison  
 Color: White  
 Power: 3W  
 Size(mm):  $\varnothing 42 \times 129$ mm  
 Lumen(lm):  $240 \pm 10$  lm  
 Inputvoltage: AC85-265V



LM-B4E3W-W

Led Type: Edison  
 Color: White  
 Power: 3W  
 Size(mm):  $\varnothing 60 \times 111$ mm  
 Lumen(lm):  $240 \pm 10$  lm  
 Inputvoltage: AC85-265V



LM-B5E3W-W

Led Type: Edison  
 Color: White  
 Power: 3W  
 Size(mm):  $\varnothing 60 \times 84$   
 Lumen(lm):  $240 \pm 10$  lm  
 Inputvoltage: AC85-265V



LM-B1S5W-W

Led Type: Edison  
 Color: White  
 Power: 5W  
 Size(mm):  $\varnothing 60 \times 105$   
 Lumen(lm):  $400 \pm 10$  lm  
 Inputvoltage: AC85-265V



LM-B1S5W-W

Led Type: Edison  
 Color: White  
 Power: 5W  
 Size(mm):  $\varnothing 60 \times 105$   
 Lumen(lm):  $400 \pm 10$  lm  
 Inputvoltage: AC85-265V



LM-B2E5W-W

Led Type: Edison  
 Color: White  
 Power: 5W  
 Size(mm):  $\varnothing 58 \times 112$   
 Lumen(lm):  $400 \pm 10$  lm  
 Inputvoltage: AC85-265V



LM-B3E5W-W

Led Type: Edison  
 Color: White  
 Power: 5W  
 Size(mm):  $\varnothing 60 \times 111$   
 Lumen(lm):  $400 \pm 10$  lm  
 Inputvoltage: AC85-265V



LM-B4E5W-W

Led Type: Edison  
 Color: White  
 Power: 5W  
 Size(mm):  $\varnothing 70 \times 136$   
 Lumen(lm):  $400 \pm 10$  lm  
 Inputvoltage: AC85-265V



LM-B5E5W-W

Led Type: Edison  
 Color: White  
 Power: 5W  
 Size(mm):  $\varnothing 60 \times 116$   
 Lumen(lm):  $400 \pm 10$  lm  
 Inputvoltage: AC85-265V



LM-B6E5W-W

Led Type: Edison  
 Color: White  
 Power: 5W  
 Size(mm):  $\varnothing 62 \times 109$   
 Lumen(lm):  $400 \pm 10$  lm  
 Inputvoltage: AC85-265V

LED Bulb light



LM-B1E6W-W

Led Type: Edison  
 Color: White  
 Power: 6W  
 Size(mm):  $\varnothing 70 \times 116$   
 Lumen(lm):  $480 \pm 10$  lm  
 Inputvoltage: AC85-265V



LM-B2E6W-W

Led Type: Edison  
 Color: White  
 Power: 6W  
 Size(mm):  $\varnothing 62 \times 119$   
 Lumen(lm):  $480 \pm 10$  lm  
 Inputvoltage: AC85-265V



LM-B1E7W-W

Led Type: Edison  
 Color: White  
 Power: 7W  
 Size(mm):  $\varnothing 62 \times 129$   
 Lumen(lm):  $590 \pm 10$  lm  
 Inputvoltage: AC85-265V



LM-B1E8W-W

Led Type: Edison  
 Color: White  
 Power: 8W  
 Size(mm):  $\varnothing 62 \times 139$   
 Lumen(lm):  $680 \pm 10$  lm  
 Inputvoltage: AC85-265V



LM-B1E9W-W

Led Type: Edison  
 Color: White  
 Power: 9W  
 Size(mm):  $\varnothing 95 \times 120$   
 Lumen(lm):  $720 \pm 10$  lm  
 Inputvoltage: AC85-265V



LM-B2E9W-W

Led Type: Edison  
 Color: White  
 Power: 9W  
 Size(mm):  $\varnothing 95 \times 150$   
 Lumen(lm):  $720 \pm 10$  lm  
 Inputvoltage: AC85-265V



LM-B1E10W-W

Led Type: Edison  
 Color: White  
 Power: 10W  
 Size(mm):  $\varnothing 100 \times 180$   
 Lumen(lm):  $800 \pm 10$  lm  
 Inputvoltage: AC85-265V



LM-B1E12W-W

Led Type: Edison  
 Color: White  
 Power: 12W  
 Size(mm):  $\varnothing 95 \times 170$   
 Lumen(lm):  $960 \pm 10$  lm  
 Inputvoltage: AC85-265V

APPLICATION CASE



Hall



Jewellery Shop



Museum



### LED Spots Light

#### Features:

1. ORIENTALIGHT take high light efficient high power led for the led spots light.
2. High power LED spots light, CE Rohs approval.
3. Imported Power LED Edison and CREE(XLAMP XP-E Q5) .
4. 3000 hours lighting decay less than 1%.
5. Aluminum housing and Aluminium PCB assure much better heat dissipation, thus longer lifespan for the LED.
6. Long lifespan up to 50,000 hours.
7. Low wattage, energy saving, the most important, save money on your electric bill.
8. No flicking, no UV and IR interference.
9. Can directly replace traditional incandescent bulbs or halogen bulbs.
10. Widely used for office building, supermarket, hotel, gallery, show room, cabinet, counter, etc.

#### Applications:

LED Spots are regularly used in place of standard incandescent light bulbs for applications including residential lighting and retail lighting. They are well suited to a variety of applications that require directional lighting of low to medium intensity, such as track lighting, recessed ceiling lights, desk lamps, pendant fixtures, landscape lighting, retail display lighting and bicycle headlights.

## LED Spots light-MR16 Base



LM-S1MR16C3W-W

Led Type: CREE  
 Color: White  
 Power: 3W  
 Size(mm):  $\varnothing 50 \times 55$   
 Lumen(lm):  $300 \pm 10$  lm  
 Inputvoltage: DC12V



LM-S2MR16C3W-W

Led Type: CREE  
 Color: White  
 Power: 3W  
 Size(mm):  $\varnothing 49.5 \times 50$   
 Lumen(lm):  $300 \pm 10$  lm  
 Inputvoltage: DC12V



LM-S3MR16C3W-W

Led Type: CREE  
 Color: White  
 Power: 3W  
 Size(mm):  $\varnothing 48.5 \times 45$   
 Lumen(lm):  $300 \pm 10$  lm  
 Inputvoltage: DC12V



LM-S4MR16C4W-W

Led Type: CREE  
 Color: White  
 Power: 4W  
 Size(mm):  $\varnothing 50 \times 55$   
 Lumen(lm):  $400 \pm 10$  lm  
 Inputvoltage: DC12V



LM-S1MR16C6W-W

Led Type: CREE  
 Color: White  
 Power: 6W  
 Size(mm):  $\varnothing 49.5 \times 79$   
 Lumen(lm):  $420 \pm 10$  lm  
 Inputvoltage: DC12V



LM-S2MR16C6W-W

Led Type: CREE  
 Color: White  
 Power: 6W  
 Size(mm):  $\varnothing 49.5 \times 79$   
 Lumen(lm):  $420 \pm 10$  lm  
 Inputvoltage: DC12V



LM-S3MR16C6W-W

Led Type: CREE  
 Color: White  
 Power: 6W  
 Size(mm):  $\varnothing 48.5 \times 75$   
 Lumen(lm):  $420 \pm 10$  lm  
 Inputvoltage: DC12V



LM-S1MR16C8W-W

Led Type: CREE  
 Color: White  
 Power: 8W  
 Size(mm):  $\varnothing 49 \times 83$   
 Lumen(lm):  $480 \pm 10$  lm  
 Inputvoltage: DC12V



LM-S2MR16C8W-W

Led Type: CREE  
 Color: White  
 Power: 8W  
 Size(mm):  $\varnothing 49.5 \times 83$   
 Lumen(lm):  $480 \pm 10$  lm  
 Inputvoltage: DC12V



LM-S1MR16C9W-W

Led Type: CREE  
 Color: White  
 Power: 9W  
 Size(mm):  $\varnothing 49.5 \times 10$   
 Lumen(lm):  $540 \pm 10$  lm  
 Inputvoltage: DC12V



LM-S1M11C1W-W

Led Type: CREE  
 Color: White  
 Power: 1W  
 Size(mm):  $\varnothing 35 \times 40$ mm  
 Lumen(lm):  $100 \pm 10$  lm  
 Inputvoltage: DC12V



LM-S2M11C1W-W

Led Type: CREE  
 Color: White  
 Power: 1W  
 Size(mm):  $\varnothing 35 \times 40$ mm  
 Lumen(lm):  $100 \pm 10$  lm  
 Inputvoltage: DC12V

LED Spots light-GU10 Base



LM-S1GU10C3W-W

Led Type: CREE  
 Color: White  
 Power: 3W  
 Size(mm):  $\varnothing 50 \times 60$   
 Lumen(lm):  $300 \pm 10$  lm  
 Inputvoltage: AC85-265V



LM-S2GU10C3W-W

Led Type: CREE  
 Color: White  
 Power: 3W  
 Size(mm):  $\varnothing 49.5 \times 58$   
 Lumen(lm):  $300 \pm 10$  lm  
 Inputvoltage: AC85-265V



LM-S3GU10C3W-W

Led Type: CREE  
 Color: White  
 Power: 3W  
 Size(mm):  $\varnothing 48.5 \times 55$   
 Lumen(lm):  $300 \pm 10$  lm  
 Inputvoltage: AC85-265V



LM-S4GU10C4W-W

Led Type: Edison  
 Color: White  
 Power: 4W  
 Size(mm):  $\varnothing 50 \times 60$   
 Lumen(lm):  $400 \pm 10$  lm  
 Inputvoltage: AC85-265V



LM-S1GU10C6W-W

Led Type: CREE  
 Color: White  
 Power: 6W  
 Size(mm):  $\varnothing 49.5 \times 88$   
 Lumen(lm):  $420 \pm 10$  lm  
 Inputvoltage: AC85-265V



LM-S2GU10C6W-W

Led Type: CREE  
 Color: White  
 Power: 6W  
 Size(mm):  $\varnothing 49.5 \times 81$   
 Lumen(lm):  $420 \pm 10$  lm  
 Inputvoltage: AC85-265V



LM-S3GU10C6W-W

Led Type: CREE  
 Color: White  
 Power: 8W  
 Size(mm):  $\varnothing 48.5 \times 78.5$   
 Lumen(lm):  $420 \pm 10$  lm  
 Inputvoltage: AC85-265V



LM-S1GU10C8W-W

Led Type: CREE  
 Color: White  
 Power: 8W  
 Size(mm):  $\varnothing 49 \times 91$   
 Lumen(lm):  $480 \pm 10$  lm  
 Inputvoltage: AC85-265V



LM-S2GU10C8W-W

Led Type: CREE  
 Color: White  
 Power: 8W  
 Size(mm):  $\varnothing 49.5 \times 90$   
 Lumen(lm):  $480 \pm 10$  lm  
 Inputvoltage: AC85-265V



LM-S1GU10C9W-W

Led Type: CREE  
 Color: White  
 Power: 9W  
 Size(mm):  $\varnothing 49.5 \times 118$   
 Lumen(lm):  $540 \pm 10$  lm  
 Inputvoltage: AC85-265V

## LED Spots light-E27 Base



LM-S1E27C3W-W

Led Type: CREE  
 Color: White  
 Power: 3W  
 Size(mm):  $\varnothing 50 \times 85$   
 Lumen(lm):  $300 \pm 10$  lm  
 Inputvoltage: AC85-265V



LM-S2E27C3W-W

Led Type: CREE  
 Color: White  
 Power: 3W  
 Size(mm):  $\varnothing 49.5 \times 88$   
 Lumen(lm):  $300 \pm 10$  lm  
 Inputvoltage: AC85-265V



LM-S3E27C3W-W

Led Type: CREE  
 Color: White  
 Power: 3W  
 Size(mm):  $\varnothing 48.5 \times 85$   
 Lumen(lm):  $300 \pm 10$  lm  
 Inputvoltage: AC85-265V



LM-S4E27C4W-W

Led Type: CREE  
 Color: White  
 Power: 4W  
 Size(mm):  $\varnothing 50 \times 80$   
 Lumen(lm):  $400 \pm 10$  lm  
 Inputvoltage: AC85-265V



LM-S1E27C6W-W

Led Type: CREE  
 Color: White  
 Power: 3W  
 Size(mm):  $\varnothing 49.5 \times 85$   
 Lumen(lm):  $420 \pm 10$  lm  
 Inputvoltage: AC85-265V



LM-S3E27C6W-W

Led Type: CREE  
 Color: White  
 Power: 3W  
 Size(mm):  $\varnothing 48.5 \times 87$   
 Lumen(lm):  $420 \pm 10$  lm  
 Inputvoltage: AC85-265V



LM-S1E27C8W-W

Led Type: CREE  
 Color: White  
 Power: 3W  
 Size(mm):  $\varnothing 49 \times 92.5$   
 Lumen(lm):  $480 \pm 10$  lm  
 Inputvoltage: AC85-265V



LM-S2E27C8W-W

Led Type: CREE  
 Color: White  
 Power: 4W  
 Size(mm):  $\varnothing 49.5 \times 92$   
 Lumen(lm):  $480 \pm 10$  lm  
 Inputvoltage: AC85-265V



LM-S1E27C9W-W

Led Type: CREE  
 Color: White  
 Power: 9W  
 Size(mm):  $\varnothing 49.5 \times 115$   
 Lumen(lm):  $540 \pm 10$  lm  
 Inputvoltage: AC85-265V

LED Spots light-E14 Base



LM-S1E14C3W-W

Led Type: CREE  
 Color: White  
 Power: 3W  
 Size(mm):  $\varnothing 50 \times 78$   
 Lumen(lm):  $300 \pm 10$  lm  
 Inputvoltage: AC85-265V



LM-S2E14C3W-W

Led Type: CREE  
 Color: White  
 Power: 3W  
 Size(mm):  $\varnothing 49.5 \times 73.5$   
 Lumen(lm):  $300 \pm 10$  lm  
 Inputvoltage: AC85-265V



LM-S3E14C3W-W

Led Type: CREE  
 Color: White  
 Power: 3W  
 Size(mm):  $\varnothing 48.5 \times 75$   
 Lumen(lm):  $300 \pm 10$  lm  
 Inputvoltage: AC85-265V



LM-S4E14C4W-W

Led Type: CREE  
 Color: White  
 Power: 4W  
 Size(mm):  $\varnothing 50 \times 75$   
 Lumen(lm):  $400 \pm 10$  lm  
 Inputvoltage: AC85-265V

APPLICATION CASE



Cabinet



Bedroom



Show window



Display case



Gallery



Hall

## LED Spots light-PAR Light



LM-PAR30E5W-W

Led Type: Edison  
 Color: White  
 Power: 5W  
 Size(mm): 94.5\*95  
 Lumen(lm): 500±10 lm  
 Inputvoltage: AC85-265V



LM-PAR30E7W-W

Led Type: Edison  
 Color: White  
 Power: 7W  
 Size(mm): 94.5\*95  
 Lumen(lm): 700±10 lm  
 Inputvoltage: AC85-265V



LM-PAR38E9W-W

Led Type: Edison  
 Color: White  
 Power: 9W  
 Size(mm): 122\*106  
 Lumen(lm): 900±10 lm  
 Inputvoltage: AC85-265V



LM-PAR38E12W-W

Led Type: Edison  
 Color: White  
 Power: 12W  
 Size(mm): 122\*130  
 Lumen(lm): 1200±10 lm  
 Inputvoltage: AC85-265V



LM-PAR38ME9W-W

Led Type: Edison  
 Color: White  
 Power: 9W  
 Size(mm): 120\*142.5  
 Lumen(lm): 850±10 lm  
 Inputvoltage: AC85-265V



LM-PAR30ME12W-W

Led Type: Edison  
 Color: White  
 Power: 12W  
 Size(mm): 95.5\*115  
 Lumen(lm): 800±10 lm  
 Inputvoltage: AC85-265V



LM-PAR30E12W-W

Led Type: Edison  
 Color: White  
 Power: 12W  
 Size(mm): 95.5\*110  
 Lumen(lm): 900±10 lm  
 Inputvoltage: AC85-265V



LM-PAR38E9W-W

Led Type: Edison  
 Color: White  
 Power: 9W  
 Size(mm): 120\*138  
 Lumen(lm): 900±10 lm  
 Inputvoltage: AC85-265V

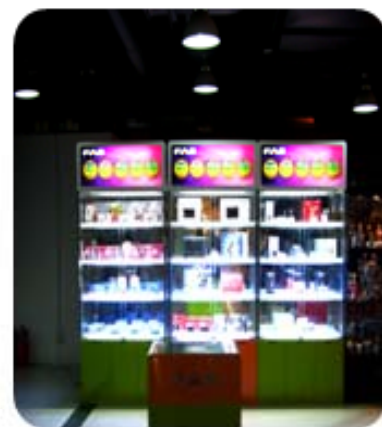
## APPLICATION CASE



Supermarket



Toys store



Underground store

## LED Spots light-AR111 Light



LM-AR111E7W-W

Led Type: Edison  
 Color: White  
 Power: 7W  
 Size(mm): 110.5\*72  
 Lumen(lm): 700±10 lm  
 Inputvoltage: DC12V



LM-AR111E9W-W

Led Type: Edison  
 Color: White  
 Power: 9W  
 Size(mm): 110.5\*72  
 Lumen(lm): 900±10 lm  
 Inputvoltage: DC12V



LM-AR111E12W-W

Led Type: Edison  
 Color: White  
 Power: 12W  
 Size(mm): 110.5\*85  
 Lumen(lm): 840±10 lm  
 Inputvoltage: DC12V



LM-AR111ME12W-W

Led Type: Edison  
 Color: White  
 Power: 12W  
 Size(mm): 110.5\*80  
 Lumen(lm): 800±10 lm  
 Inputvoltage: DC12V



LM-AR111E7W-W

Led Type: Edison  
 Color: White  
 Power: 7W  
 Size(mm): 110.5\*72  
 Lumen(lm): 700±10 lm  
 Inputvoltage: AC85-265V



LM-AR111E9W-W

Led Type: Edison  
 Color: White  
 Power: 9W  
 Size(mm): 110.5\*72  
 Lumen(lm): 900±10 lm  
 Inputvoltage: AC85-265V



LM-AR111E12W-W

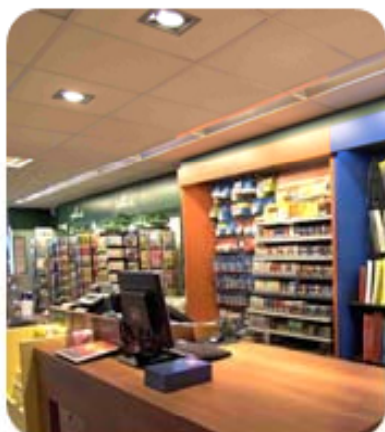
Led Type: Edison  
 Color: White  
 Power: 12W  
 Size(mm): 110.5\*80  
 Lumen(lm): 800±10 lm  
 Inputvoltage: AC85-265V



LM-AR111ME12W-W

Led Type: Edison  
 Color: White  
 Power: 12W  
 Size(mm): 111\*52.5  
 Lumen(lm): 540±10 lm  
 Inputvoltage: AC85-265V

## APPLICATION CASE



Bookstore



Glasses Store



Couture



## LED DownLight

### Features:

1. ORIENTALIGHT take high light efficient high power led for the led Downlight.
2. High power LED Downlight, CE Rohs approval.
3. Imported Power LED Edison and CREE(XLAMP XP-E Q5) .
4. 3000 hours lighting decay less than 1%.
5. Aluminum housing and Aluminium PCB assure much better heat dissipation, thus longer lifespan for the LED.
6. Long lifespan up to 50,000 hours.
7. Low wattage, energy saving, the most important, save money on your electric bill.
8. No flicking, no UV and IR interference.
9. Can directly replace traditional incandescent bulbs or halogen bulbs.
10. Widely used for office building, supermarket, hotel, gallery, show room, cabinet, counter, etc.

### Applications:

LED downlights are widely used as pool light, shooting light, decorating light, showing and wall light, retail stores, residential interior/exterior, hospitality, and so on.

**LED DownLight-Recessed Down Light**


LM-DL303E9W-W

Led Type: Edison  
 Color: White  
 Power: 9W  
 Size(mm): 80\*98.5  
 Lumen(lm): 540±10 lm  
 Inputvoltage: AC85-265V



LM-DL301E3W-W

Led Type: Edison  
 Color: White  
 Power: 3W  
 Size(mm): 85\*70  
 Lumen(lm): 300±10 lm  
 Inputvoltage: AC85-265V



LM-DL501E5W-W

Led Type: Edison  
 Color: White  
 Power: 5W  
 Size(mm): 105\*72  
 Lumen(lm): 500±10 lm  
 Inputvoltage: AC85-265V



LM-DL701E7W-W

Led Type: Edison  
 Color: White  
 Power: 9W  
 Size(mm): 105\*72  
 Lumen(lm): 700±10 lm  
 Inputvoltage: AC85-265V



LM-DL901E9W-W

Led Type: Edison  
 Color: White  
 Power: 9W  
 Size(mm): 134\*85  
 Lumen(lm): 900±10 lm  
 Inputvoltage: AC85-265V



LM-DL1201E12W-W

Led Type: Edison  
 Color: White  
 Power: 12W  
 Size(mm): 134\*80  
 Lumen(lm): 1200±10 lm  
 Inputvoltage: AC85-265V



LM-DL1501E15W-W

Led Type: Edison  
 Color: White  
 Power: 15W  
 Size(mm): 140\*73  
 Lumen(lm): 1500±10 lm  
 Inputvoltage: AC85-265V



LM-DL150ME15W-W

Led Type: Edison  
 Color: White  
 Power: 15W  
 Size(mm): 190\*83  
 Lumen(lm): 1280±10 lm  
 Inputvoltage: AC85-265V



LM-DL602E12W-W

Led Type: Edison  
 Color: White  
 Power: 12W  
 Size(mm): 112.5\*97.5  
 Lumen(lm): 840±10 lm  
 Inputvoltage: AC85-265V



LM-DL902E18W-W

Led Type: Edison  
 Color: White  
 Power: 18W  
 Size(mm): 116.5\*99.5  
 Lumen(lm): 1250±10 lm  
 Inputvoltage: AC85-265V



LM-DL1202E24W-W

Led Type: Edison  
 Color: White  
 Power: 24W  
 Size(mm): 154.5\*99.5  
 Lumen(lm): 1680±10 lm  
 Inputvoltage: AC85-265V



LM-DL1502E30W-W

Led Type: Edison  
 Color: White  
 Power: 30W  
 Size(mm): 172\*99.5  
 Lumen(lm): 2100±10 lm  
 Inputvoltage: AC85-265V

**LED DownLight-Recessed Down Light(PC Cover)**



LM-DL301ME3W-W

Led Type: Edison  
 Color: White  
 Power: 3W  
 Size(mm): 81\*50  
 Lumen(lm): 250±10 lm  
 Inputvoltage: AC85-265V



LM-DL501ME5W-W

Led Type: Edison  
 Color: White  
 Power: 5W  
 Size(mm): 91\*55  
 Lumen(lm): 380±10 lm  
 Inputvoltage: AC85-265V



LM-DL701ME7W-W

Led Type: Edison  
 Color: White  
 Power: 7W  
 Size(mm): 101\*65  
 Lumen(lm): 580±10 lm  
 Inputvoltage: AC85-265V



LM-DL901ME9W-W

Led Type: Edison  
 Color: White  
 Power: 30W  
 Size(mm): 120\*81  
 Lumen(lm): 720±10 lm  
 Inputvoltage: AC85-265V



LM-DL1201ME12W-W

Led Type: Edison  
 Color: White  
 Power: 12W  
 Size(mm): 125\*90  
 Lumen(lm): 980±10 lm  
 Inputvoltage: AC85-265V



LM-DL1501ME15W-W

Led Type: Edison  
 Color: White  
 Power: 15W  
 Size(mm): 138\*100  
 Lumen(lm): 1200±10 lm  
 Inputvoltage: AC85-265V

**APPLICATION CASE**



Jewelry ambry



Market



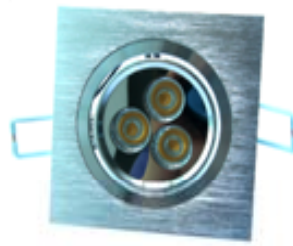
Hall

LED Puck Light



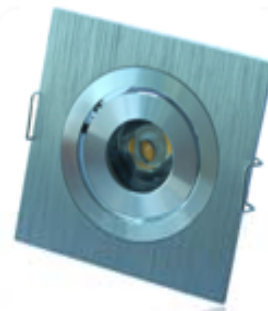
LM-PL3011E3W-W

Led Type: Edison  
 Color: White  
 Power: 3W  
 Size(mm): 69.5\*14  
 Lumen(lm): 300±10 lm  
 Inputvoltage: AC85-265V



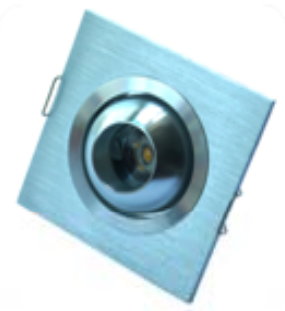
LM-PL3012E3W-W

Led Type: Edison  
 Color: White  
 Power: 3W  
 Size(mm): 92\*92\*34.5  
 Lumen(lm): 300±10 lm  
 Inputvoltage: AC85-265V



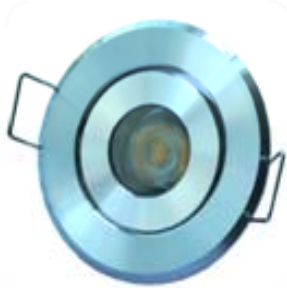
LM-PL1031E3W-W

Led Type: Edison  
 Color: White  
 Power: 3W  
 Size(mm): 60\*60\*20.5  
 Lumen(lm): 180±10 lm  
 Inputvoltage: AC85-265V



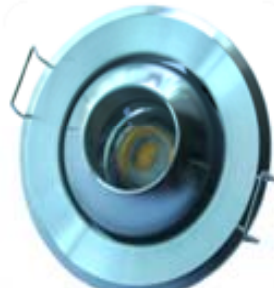
LM-PL1032E3W-W

Led Type: Edison  
 Color: White  
 Power: 3W  
 Size(mm): 60\*60\*28  
 Lumen(lm): 180±10 lm  
 Inputvoltage: AC85-265V



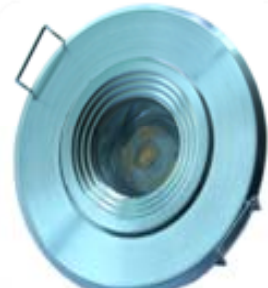
LM-PL1033E3W-W

Led Type: Edison  
 Color: White  
 Power: 3W  
 Size(mm): 52.5\*20  
 Lumen(lm): 180±10 lm  
 Inputvoltage: AC85-265V



LM-PL1034E3W-W

Led Type: Edison  
 Color: White  
 Power: 3W  
 Size(mm): 52.5\*26.5  
 Lumen(lm): 180±10 lm  
 Inputvoltage: AC85-265V



LM-PL1035E3W-W

Led Type: Edison  
 Color: White  
 Power: 3W  
 Size(mm): 53.5\*21.5  
 Lumen(lm): 180±10 lm  
 Inputvoltage: AC85-265V



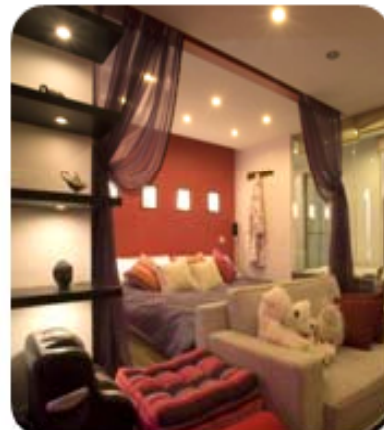
LM-PL1036E3W-W

Led Type: Edison  
 Color: White  
 Power: 3W  
 Size(mm): 39.5\*55.5  
 Lumen(lm): 180±10 lm  
 Inputvoltage: AC85-265V

APPLICATION CASE



Rest room



Parlour



Museum



### LED Plug Light(G24)

#### Features:

1. ORIENTALIGHT take high efficient constant current driving circuit for the SMD5050 led G24 light, conversion efficiency  $\geq 95\%$ .
2. Separation circuit design, which meet CE/FCC/UL standard.
3. The lifespan of led tube up to 50,000hours, 5000 hours lighting decay less than 1%.
4. Aluminum back cover and Aluminium PCB assure much better heat dissipation, thus longer lifespan for the LED.
5. High brightness, high light efficiency(**110lm/W**).
6. G24 and E27 are available, 180° rotatable cap, CE Rohs approval.
7. Unique high efficiency driver design, good thermal dissipation. Superbright SMD5050, imported chip Epistar.
8. No UV and RF interference.
9. No hazardous materials & fully RoHS-compliant.
10. Widely used for hotel, supermarket, office, museum, gallery etc. etc.

#### Applications:

Replacement bulbs for general lighting, especially for museums, art galleries, super market. Counters where UV or IR radiation is undesirable.

LED Plug Light(G24)



LM-G24E5W2P-W

Led Type: SMD5050  
 Color: White  
 Power: 5W  
 Size(mm): 115\*38\*38  
 Lumen(lm): 550±30 lm  
 Inputvoltage: AC85-265V



LM-G24E8W2P-W

Led Type: SMD5050  
 Color: White  
 Power: 8W  
 Size(mm): 140\*38\*38  
 Lumen(lm): 880±30 lm  
 Inputvoltage: AC85-265V



LM-G24E11W2P-W

Led Type: SMD5050  
 Color: White  
 Power: 11W  
 Size(mm): 160\*38\*38  
 Lumen(lm): 1200±30 lm  
 Inputvoltage: AC85-265V



LM-E27E5W-W

Led Type: SMD5050  
 Color: White  
 Power: 5W  
 Size(mm): 115\*38\*38  
 Lumen(lm): 550±30 lm  
 Inputvoltage: AC85-265V



LM-G24E8WC2P-W

Led Type: SMD5050  
 Color: White  
 Power: 8W  
 Size(mm): 138\*38\*38  
 Lumen(lm): 800±30 lm  
 Inputvoltage: AC85-265V



LM-G24E11WC2P-W

Led Type: SMD5050  
 Color: White  
 Power: 11W  
 Size(mm): 138\*38\*38  
 Lumen(lm): 1100±30 lm  
 Inputvoltage: AC85-265V



LM-G24E13WC2P-W

Led Type: SMD5050  
 Color: White  
 Power: 13W  
 Size(mm): 160\*38\*38  
 Lumen(lm): 1200±30 lm  
 Inputvoltage: AC85-265V



LM-G24E8WC2P-M

Led Type: SMD5050  
 Color: White  
 Power: 8W  
 Size(mm): 138\*38\*38  
 Lumen(lm): 750±30 lm  
 Inputvoltage: AC85-265V



LM-G24E8WF2P-W

Led Type: SMD5050  
 Color: White  
 Power: 8W  
 Size(mm): 138\*38\*38  
 Lumen(lm): 720±30 lm  
 Inputvoltage: AC85-265V



LM-G24E11WF2P-W

Led Type: SMD5050  
 Color: White  
 Power: 11W  
 Size(mm): 138\*38\*38  
 Lumen(lm): 1000±30 lm  
 Inputvoltage: AC85-265V



LM-G24E13WF2P-W

Led Type: SMD5050  
 Color: White  
 Power: 13W  
 Size(mm): 160\*38\*38  
 Lumen(lm): 1200±30 lm  
 Inputvoltage: AC85-265V



LM-G24E8WF2P-M

Led Type: SMD5050  
 Color: Warm White  
 Power: 8W  
 Size(mm): 138\*38\*38  
 Lumen(lm): 640±30 lm  
 Inputvoltage: AC85-265V

# APPLICATION CASE



Supermarket



Banquet hall



Kitchen



Hotels



Market



Clothing store



Parlour



Fleshpots



Bedroom



### LED Ultrathin Panel Light

#### Features:

1. Energy -efficient, environment friendly.
2. Brightness degradation: 3% - 5% 1kh.
3. No UV or IR radiation.
4. Professional thermal management with Aluminium housing .
5. Cool white, warm white, pure white are available.
6. Can be ceiling or wall surface-mounted.
7. Can be recessed mounted, surface mounted or work as a pendant.
8. Body temperature: less than 20 degrees Celsius.
9. LED working temperature: less than 50 degrees Celsius.
10. Working Temperature: -40 ~ 70 degrees Celsius.
11. Lifespan: 50,000 hours, Commercial Lighting, Office Lighting, Warehouse Lighting, Supermarket Lighting!

#### Advantages:

1. Ultra-thin design. The external use anodized aluminium alloy to show elegance and luxury. It has both good lighting effects and beautiful appearance.
2. This series of products using low-power LED chip to avoid highly concentrated heat and using highly efficient thermal conductive to longer lamp life.
3. Unique luminous design of using high permeability light guide plate to form a uniform soft yet bright illumination

LED Ultrathin Panel Light



LM-P302E15W-W

Led Type: SMD3528  
 Color: White  
 Power: 15W  
 Size(mm): 300\*300\*15  
 Lumen(lm): 1400±10 lm  
 Inputvoltage: AC85-265V



LM-P306E18W-W

Led Type: SMD3528  
 Color: White  
 Power: 18W  
 Size(mm): 300\*600\*15  
 Lumen(lm): 1800±10 lm  
 Inputvoltage: AC85-265V



LM-P602E40W-W

Led Type: SMD3528  
 Color: White  
 Power: 40W  
 Size(mm): 600\*600\*15  
 Lumen(lm): 3800±10 lm  
 Inputvoltage: AC85-265V



LM-P3012E45W-W

Led Type: SMD3528  
 Color: White  
 Power: 45W  
 Size(mm): 300\*1200\*15  
 Lumen(lm): 4100±10 lm  
 Inputvoltage: AC85-265V

APPLICATION CASE



Museum



Parlour



Bedroom



Parlour



Underground



Parking



## LED Neon Light

### Features:

1. Energy-saving, and the power consumption is 3.5W / M (R, Y, O), 4.6W (G, B, W).
2. High brightness, and the light source is imported LED, 80LED / m could guarantee light-emitting effect and high brightness.
3. longevity and durability: Lifespan could reach more than 50,000hrs.
4. soft: Flexible LED neon light, which can reach 360 degrees bend, and can be cut anywhere to make a variety of letters, graphics,
5. Energy saving, safe, durable, non-fragile, flexible, easy to bend, maintenance-free, 12V, 24V, 110V, 220V-240V is available.
6. Uses imports the great size excellent chip, brightness high, the performance is stable;
7. Temperature range:  $-30^{\circ}\text{C}$   $-+70^{\circ}\text{C}$ ;
8. single color 80 leds / meter, cuttable per meter. Color: R Y B W RYBG RGB etc. Imported high brightness LED.

### Applications:

Mainly uses in Hotel, KTV, pub, family building decoration, ceiling decoration, garden, bridge, walkway, large decorative works, etc.

LED Neon Light



LM-NF80W-220V

Led Type: Epistar  
 Color: White  
 Power: 3.9W/m  
 Size(mm): 1000\*26\*16mm  
 Led Qty: 80pcs  
 Inputvoltage: AC85-265V



LM-NF80M-220V

Led Type: Epistar  
 Color: Warm White  
 Power: 3.9W/m  
 Size(mm): 1000\*26\*16mm  
 Led Qty: 80pcs  
 Inputvoltage: AC85-265V



LM-NF80R-220V

Led Type: Epistar  
 Color: Red  
 Power: 3.9W/m  
 Size(mm): 1000\*26\*16mm  
 Led Qty: 80pcs  
 Inputvoltage: AC85-265V



LM-NF80Y-220V

Led Type: Epistar  
 Color: Yellow  
 Power: 3.9W/m  
 Size(mm): 1000\*26\*16mm  
 Led Qty: 80pcs  
 Inputvoltage: AC85-265V



LM-NF80G-220V

Led Type: Epistar  
 Color: Green  
 Power: 3.9W/m  
 Size(mm): 1000\*26\*16mm  
 Led Qty: 80pcs  
 Inputvoltage: AC85-265V



LM-NF80B-220V

Led Type: Epistar  
 Color: Blue  
 Power: 3.9W/m  
 Size(mm): 1000\*26\*16mm  
 Led Qty: 80pcs  
 Inputvoltage: AC85-265V



LM-NF80A-220V

Led Type: Epistar  
 Color: Amber  
 Power: 3.9W/m  
 Size(mm): 1000\*26\*16mm  
 Led Qty: 80pcs  
 Inputvoltage: AC85-265V



LM-NF80P-220V

Led Type: Epistar  
 Color: Purple  
 Power: 3.9W/m  
 Size(mm): 1000\*26\*16mm  
 Led Qty: 80pcs  
 Inputvoltage: AC85-265V



LM-NF80RGB-220V

Led Type: Epistar  
 Color: RGB  
 Power: 3.9W/m  
 Size(mm): 1000\*26\*16mm  
 Led Qty: 80pcs  
 Inputvoltage: AC85-265V



LM-NF80RB-220V

Led Type: Epistar  
 Color: RB  
 Power: 3.9W/m  
 Size(mm): 1000\*26\*16mm  
 Led Qty: 80pcs  
 Inputvoltage: AC85-265V



LM-NF80RB-220V

Led Type: Epistar  
 Color: RB  
 Power: 3.9W/m  
 Size(mm): 1000\*26\*16mm  
 Led Qty: 80pcs  
 Inputvoltage: AC85-265V



LM-NF80RYBG-220V

Led Type: Epistar  
 Color: RYBG  
 Power: 3.9W/m  
 Size(mm): 1000\*26\*16mm  
 Led Qty: 80pcs  
 Inputvoltage: AC85-265V

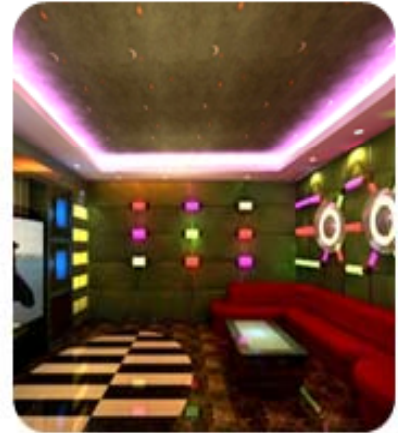
# APPLICATION CASE



Indoor



Bar



KTV



Parlour



Villa



Hall



Hotel



Bridge



Bedroom



### LED HighBay Light

#### Features:

- 1)Using high power ceramic multi-chip LED.
- 2)High quality aluminium body,patented cooling body design,anodizing tensile reflector ,acrylic light source enclosure.
- 3)The unique thermal design and the power supply box is a perfect combination,reasonably using movement of air from all directions,effectively improving heat conduction,thereby reducing the lamp body temperature,so that LED could be in the best working environment in order to ensure light and power supply life.
- 4)With constant current constant voltage control circuit,applied voltage width(AC85V-265V),overcome the light instability because of using ballast (Using ballast create generation grid and noise pollution which make the light instability),avoiding bringing stimulus and fatigue to eyes in working.
- 5)WorkingTemperature: -40 ~ 55 degrees Celsius.
- 6)IP Grade:IP65
- 7)No hazardous materials & fully RoHS-compliant.

#### Applications:

LED High Bay applications in buildings, factory, warehouse, large supermarket, sculpture, stadiums, squares, docks etc.

LED HighBay Light



LM-HB1B30W-W

Led Type: Bridgelux  
 Color: White  
 Power: 30W  
 Size(mm): 500\*371  
 Lumen(lm): 2700±30 lm  
 Inputvoltage: AC85-265V



LM-HB1B50W-W

Led Type: Bridgelux  
 Color: White  
 Power: 50W  
 Size(mm): 500\*371  
 Lumen(lm): 4500±30 lm  
 Inputvoltage: AC85-265V



LM-HB1B80W-W

Led Type: Bridgelux  
 Color: White  
 Power: 80W  
 Size(mm): 500\*441  
 Lumen(lm): 7200±30 lm  
 Inputvoltage: AC85-265V



LM-HB1B100W-W

Led Type: Bridgelux  
 Color: White  
 Power: 100W  
 Size(mm): 500\*466  
 Lumen(lm): 9000±30 lm  
 Inputvoltage: AC85-265V



LM-HB2B30W-W

Led Type: Bridgelux  
 Color: White  
 Power: 30W  
 Size(mm): 420\*486  
 Lumen(lm): 2700±30 lm  
 Inputvoltage: AC85-265V



LM-HB2B50W-W

Led Type: Bridgelux  
 Color: White  
 Power: 50W  
 Size(mm): 420\*501  
 Lumen(lm): 4500±30 lm  
 Inputvoltage: AC85-265V



LM-HB2B80W-W

Led Type: Bridgelux  
 Color: White  
 Power: 80W  
 Size(mm): 420\*556  
 Lumen(lm): 7200±30 lm  
 Inputvoltage: AC85-265V



LM-HB2B100W-W

Led Type: Bridgelux  
 Color: White  
 Power: 100W  
 Size(mm): 420\*581  
 Lumen(lm): 9000±30 lm  
 Inputvoltage: AC85-265V

APPLICATION CASE



Factory



Parking lot



Basketball



### LED Flood Light

#### Features:

- 1) Using high power ceramic multi-chip LED.
- 2) High quality aluminium body, patented cooling body design, anodizing tensile reflector, acrylic light source enclosure.
- 3) The unique thermal design and the power supply box is a perfect combination, reasonably using movement of air from all directions, effectively improving heat conduction, thereby reducing the lamp body temperature, so that LED could be in the best working environment in order to ensure light and power supply life.
- 4) With constant current constant voltage control circuit, applied voltage width (AC85V-265V), overcome the light instability because of using ballast (Using ballast create generation grid and noise pollution which make the light instability), avoiding bringing stimulus and fatigue to eyes in working.
- 5) Working Temperature: -40 ~ 55 degrees Celsius.
- 6) IP Grade: IP65
- 7) No hazardous materials & fully RoHS-compliant.

#### Applications:

LED Flood light applications in buildings, factory, warehouse, large supermarket, sculpture, stadiums, squares, docks etc.

LED Flood Light



LM-FDB10W-W

Led Type: Bridgelux  
 Color: White  
 Power: 10W  
 Size(mm): 114.5\*85\*105  
 Lumen(lm): 900±30 lm  
 Inputvoltage: AC85-265V



LM-FDB30W-W

Led Type: Bridgelux  
 Color: White  
 Power: 30W  
 Size(mm): 185\*223\*126  
 Lumen(lm): 2700±30 lm  
 Inputvoltage: AC85-265V



LM-FDB50W-W

Led Type: Bridgelux  
 Color: White  
 Power: 50W  
 Size(mm): 236\*290\*183  
 Lumen(lm): 5400±30 lm  
 Inputvoltage: AC85-265V



LM-FDB80W-W

Led Type: Bridgelux  
 Color: White  
 Power: 80W  
 Size(mm): 285\*380\*110  
 Lumen(lm): 7200±30 lm  
 Inputvoltage: AC85-265V

APPLICATION CASE



Tunnel



Square



Natatorium



Golf course



Football field



Field



## LED Street Light

### Features:

- 1)ORIENTALIGHT take high light efficient high power led for the led street light.
- 2)High quality aluminium body,patented cooling body design,anodizing tensile reflector ,acrylic light source enclosure.
- 3)The lights applied with best light source-LED. Accelerated the unique reflector which was developed by us ourself,it attains the light onto the road with maximum effect and formed a rectangular light spot.The entire light was made of the aluminum alloy with high index of the heat dissipation,the oxidize surface also ensured the heat dissipation reliability.Meanwhile the lamp has been designed a respiratory system to ensure the dust resistance,water resistance and self cleaning ability.
- 4)3000 hours lighting decay less than 1%.
- 5)WorkingTemperature: -40 ~ 55 degrees Celsius.
- 6)IP Grade:IP44,Working Lifespan:>50,000Hours
- 7)No hazardous matetials & fully RoHS-compliant.
- 8)The lights mainly applied in high-way ,urban major road ,secondary road,plaza,park,industry zone,residence area etc.

### Applications:

The lights mainly applied in high-way ,urban major road ,secondary road,plaza,park,industry zone,residence area etc.

## LED PowerStreet Light



LM-SL1E40E28W-W



LM-SL2E40E30W-W



LM-SL3E40E30W-W



LM-SL3E40E36W-W

Led Type: Epistar  
 Color: White  
 Power: 28W  
 Size(mm):  $\varnothing 95 \times 285$   
 Lumen(lm):  $2800 \pm 10$  lm  
 Inputvoltage: AC85-265V

Led Type: Epistar  
 Color: White  
 Power: 28W  
 Size(mm):  $\varnothing 105 \times 285$   
 Lumen(lm):  $3000 \pm 10$  lm  
 Inputvoltage: AC85-265V

Led Type: Epistar  
 Color: White  
 Power: 30W  
 Size(mm):  $\varnothing 105 \times 285$   
 Lumen(lm):  $3000 \pm 10$  lm  
 Inputvoltage: AC85-265V

Led Type: Epistar  
 Color: White  
 Power: 36W  
 Size(mm):  $\varnothing 105 \times 300$   
 Lumen(lm):  $3800 \pm 10$  lm  
 Inputvoltage: AC85-265V

## APPLICATION CASE



The Road



Highway



Street



Courtyard



Hotel square



Villa

## Accessories-Power Supply



**LM-PS12V-30W-NA/EU**

Led Type: Power Supply  
 Color: Black  
 Power: 30W  
 Size(mm): 98\*43.7\*27.8  
 Current(mA): 2500±20mA  
 Inputvoltage: AC100-240V



**LM-PS12V-36W-NA/EU**

Led Type: Power Supply  
 Color: Black  
 Power: 36W  
 Size(mm): 98\*43.7\*27.8  
 Current(mA): 3000±20 mA  
 Inputvoltage: AC100-240V



**LM-PS12V-45W-NA/EU**

Led Type: Power Supply  
 Color: Black  
 Power: 45W  
 Size(mm): 98\*43.7\*27.8  
 Current(mA): 3750±20mA  
 Inputvoltage: AC100-240V



**LM-PS12V-60W-NA/EU**

Led Type: Power Supply  
 Color: Black  
 Power: 60W  
 Size(mm): 98\*43.7\*27.8  
 Current(mA): 5000±20 mA  
 Inputvoltage: AC100-240V



**LM-IN12V-30W**

Led Type: Power Supply  
 Color: Yellow  
 Power: 30W  
 Size(mm): 160\*98\*40  
 Current(mA): 2500±10 mA  
 Inputvoltage: AC100-240V



**LM-IN12V-60W**

Led Type: Power Supply  
 Color: Yellow  
 Power: 60W  
 Size(mm): 160\*98\*40  
 Current(mA): 5000±10mA  
 Inputvoltage: AC100-240V



**LM-IN12V-100W**

Led Type: Power Supply  
 Color: Yellow  
 Power: 100W  
 Size(mm): 160\*98\*40  
 Current(mA): 8300±10mA  
 Inputvoltage: AC100-240V



**LM-IN12V-150W**

Led Type: Power Supply  
 Color: Yellow  
 Power: 150W  
 Size(mm): 160\*98\*40  
 Current(mA): 12500±10mA  
 Inputvoltage: AC100-240V



**LM-WF12V-15W**

Led Type: Power Supply  
 Color: Black  
 Power: 15W  
 Size(mm): 135\*W29\*20  
 Current(mA): 1250±10mA  
 Inputvoltage: AC100-240V



**LM-WF12V-30W**

Led Type: Power Supply  
 Color: Black  
 Power: 30W  
 Size(mm): 135\*W29\*20  
 Current(mA): 2500±10mA  
 Inputvoltage: AC100-240V



**LM-WF12V-60W**

Led Type: Power Supply  
 Color: Black  
 Power: 60W  
 Size(mm): 135\*W29\*20  
 Current(mA): 5000±10mA  
 Inputvoltage: AC100-240V



**LM-WF12V-100W**

Led Type: Power Supply  
 Color: Black  
 Power: 100W  
 Size(mm): 135\*W29\*20  
 Current(mA): 8300±10 mA  
 Inputvoltage: AC100-240V

44

## Accessories-Controller



LM-DM-12V-96W

Type: Dimmable  
Color: White  
Voltage: DC12V  
Size(mm): 89\*59\*35  
Power(W): 96W  
Applications: SMD 3528



LM-RFDM-12V-96W

Type: Dimmable  
Color: Black  
Voltage: DC12V  
Size(mm): 89\*59\*35  
Power(W): 96W  
Applications: SMD 3528



LM-IRDM-12-24V

Type: Dimmable  
Color: Yellow  
Voltage: DC12V  
Size(mm): 40\*28\*16  
Power(W): 96W  
Applications: SMD 3528



LM-IRDMRGB-12-24V

Type: RGB Controller  
Color: Blue  
Voltage: DC12V  
Size(mm): 40\*28\*16  
Power(W): 96W  
Applications: SMD 5050 RGB



LM-3600RGB-5-24V

Type: RGB Controller  
Color: White  
Voltage: DC5-24V  
Size(mm): 211\*40\*30  
Power(W): 144W  
Applications: SMD 5050 RGB



LM-3700RGB-12-24V

Type: RGB Controller  
Color: White  
Voltage: DC12-24V  
Size(mm): 211\*40\*30  
Power(W): 144W  
Applications: SMD 5050 RGB



LM-3800RGB-5-24V

Type: RGB Controller  
Color: Black  
Voltage: DC12-24V  
Size(mm): 142\*73\*30  
Power(W): 144W  
Applications: SMD 5050 RGB



LM-144RGB-12V

Type: RGB Controller  
Color: White  
Voltage: DC12  
Size(mm): 128\*84\*23  
Power(W): 144W  
Applications: SMD 5050 RGB



LM-360RGB-12V

Type: RGB Controller  
Color: White  
Voltage: DC12V  
Size(mm): 165\*97\*32  
Power(W): 360W  
Applications: SMD 5050 RGB



LM-C144PA-12V

Type: Power Amplifier  
Color: Red  
Voltage: DC12-24V  
Size(mm): 40\*28\*16  
Power(W): 96W  
Applications: SMD 5050 RGB



LM-A360PA-12V

Type: Power Amplifier  
Color: White  
Voltage: DC12V  
Size(mm): 128\*84\*23  
Power(W): 144W  
Applications: SMD 5050 RGB



LM-1500RGB-12V

Type: Power Amplifier  
Color: White  
Voltage: DC12V  
Size(mm): 165\*97\*32  
Power(W): 1500W  
Applications: SMD 5050 RGB

## Connector- Non-waterproof Connector/Waterproof Connector



**LM-CN-2P**

Type: Connector  
 Color: White  
 PIN: 2pin  
 Size(mm): 15.5\*2.35  
 line long(mm): 150mm  
 Application: Led Flexible strip



**LM-CN-4P**

Type: Connector  
 Color: White  
 PIN: 4pin  
 Size(mm): 15.5\*2.35  
 line long(mm): 150mm  
 Application: Led Flexible strip



**LM-CNI-2P**

Type: Connector  
 Color: B/R  
 PIN: 2pin  
 Size(mm): 15.5\*2.35\*150  
 line long(mm): 150mm  
 Application: Led Flexible strip



**LM-CNI-4P**

Type: Connector  
 Color: R/B/G/B  
 PIN: 4pin  
 Size(mm): 15.5\*2.35\*150  
 line long(mm): 150mm  
 Application: Led Flexible strip



**LM-CNI-2P2**

Type: Connector  
 Color: B/R  
 PIN: 2pin  
 Size(mm): 15.5\*2.35\*150  
 line long(mm): 150mm  
 Application: Led Flexible strip



**LM-CNI-4P2**

Type: Connector  
 Color: R/B/G/B  
 PIN: 4pin  
 Size(mm): 15.5\*2.35\*150  
 line long(mm): 150mm  
 Application: Led Flexible strip



**LM-CNB-2P**

Type: Connector  
 Color: Black  
 PIN: 2pin  
 Size(mm):  $\varnothing$  15\*150  
 line long(mm): 150mm  
 Application: Led Flexible strip



**LM-CNC-2P**

Type: Connector  
 Color: White  
 PIN: 2pin  
 Size(mm):  $\varnothing$  12\*150  
 line long(mm): 150mm  
 Application: Led Flexible strip



**LM-CNW-2P-WF**

Type: Waterproof Connecto  
 Color: Black  
 PIN: 2pin  
 Size(mm):  $\varnothing$  10\*150  
 line long(mm): 150mm  
 Application: Led Flexible strip



**LM-CNW-4P-WF**

Type: Waterproof Connecto  
 Color: Black  
 PIN: 4pin  
 Size(mm):  $\varnothing$  15\*150  
 line long(mm): 150mm  
 Application: Led Flexible strip



**LM-CNB-2P-WF**

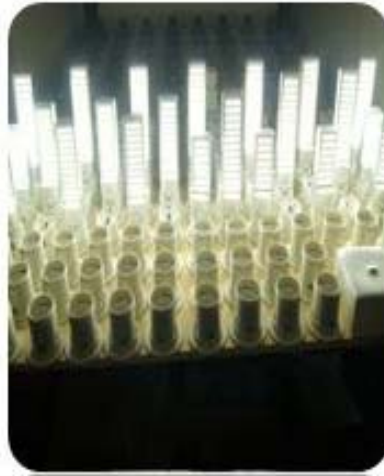
Type: Waterproof Connecto  
 Color: Black  
 PIN: 2pin  
 Size(mm):  $\varnothing$  10\*150  
 line long(mm): 150mm  
 Application: Led Flexible strip



**LM-CNB-4P-WF**

Type: Waterproof Connecto  
 Color: Black  
 PIN: 4pin  
 Size(mm):  $\varnothing$  15\*150  
 line long(mm): 150mm  
 Application: Led Flexible strip

Product testing & Aging





## **LED ORIENTALIGHT CO.,LIMITED**

Adress:C Building,Sanmin Industrial zone,Shiyan Town,Bao'an District,Shenzhen,GuangDong,G.D.518109,China.

Tel:+86-755-29079955 Fax:+86-755-29079950

E-mail:[info@ledorientalight.com](mailto:info@ledorientalight.com) [sales@ledorientalight.com](mailto:sales@ledorientalight.com)

Website:[www.ledorientalight.com/www.orientalighting.com](http://www.ledorientalight.com/www.orientalighting.com)